

# Åuk fgeky çnsk ea i 'kkyu ea vknokl h xq̄tj fdl kuka dh I ghfxrk plnu dękj jk; \*] [ktku fl g ,oa vkjrh'

Mš jh foLrkj çHkkx] jk"Vh; Ms jh vuq U/kku I ĄFkk] djuky & 132 001] gfj; k.k] Hkkj r i klr%višy 2019 Lohdr%ebz2019

## I kjkak

Hkkjrh] nfu; k eavknokl h vkcknh oky nř jk I cl scMk nšk gđ fgeky çnsk ds"xq̄tj" vknokl h fdl ku vHkh Hkh Hkđ i kyu vks nřk , oanřk mRi knka dh fcØh ds vi us i q̄rsh 0; ol k; eayxagđ "xq̄tj" tutkfr dk çę[k 0; ol k; i 'kkyu , oaMs jh gđrFkk ; g [kk ] vkrFkd] i ; kbj .k] I ĄFkkxr] LokLF; ] 'kđ{kd] I kekftd] vol ĵpukRed , oaišk.k I ĵ{kk dsl kFk I kFk vknokl h xq̄tj kadh vktfodk Hkh I ĵuf'pr djrk gđ xjhc I sxjhc vknokl h "xq̄tj" fdl ku ds ikl Hkh Mš jh i 'kqgkrsgđ tksmlgaxjhc I sckgj fudyuseenn djrs gđ xk; ] Hkđ vks cdjh tš sMs jh i 'kky vknokl h "xq̄tj" fdl kuka dh i 'kkyk ds egroi wkz i 'kq gđ ftudk vknokl ; ka ds vFkđ; oLFkk ea cgr ; ksnku gđ oržku v/; ; u] i 'kkyu 0; ol k; eavknokl h "xq̄tj" fdl kuka dh Hkkxhnhkj ds fo'yšk.k ij tkj fn; k x; k gđ ; g v/; ; u fgeky çnsk ds Åuk ftyseavk; ktr fd; k x; k Fkka MKV , df=r djus ds fy, ] Åuk fty sds nksCy, dks%vEc , oa xxj%½ dk crjrh < x I sp; fur fd; k x; k rFkk çR; d Cy, d I s nks & nksxkka dk p; u fd; k x; kA bl çdkj Åuk fty sl dęy pkj xkoka dk crjrh < x I sp; u fd; k x; kA I ĵfpr I k{kkRdkj vuq ph dk mi ; kx djds; k-fPND : i I sp; fur dęy vLl h %80% "xq̄tj" fdl kuka I s, d= fd; k x; k Fkka nřk nř f[kykuš LokLF; nř[kHky vks çdku çtuu vks Hkđ i kyu I sl Ąr/kr igy%kaea Hkkxhnhkj vf/kd nř[kh xBA

'kkn dęh %vknokl h fdl ku] fu; Zk ysk] Hkkxhnhkj] i 'kkyu] nř/k mRi knuA

Bhartiya Krishi Anushandhan Patrika, 34(2): 112-117, 2019

## Participation of Tribal “Gujjar” farmers in animal husbandry and dairying in Una, Himachal Pradesh

Chandan Kumar Rai\*, Khajan Singh and Arti

Dairy Extension Division, ICAR-National Dairy Research Institute, Karnal, Haryana-132 001, India

Received: April 2019

Accepted: May 2019

### ABSTRACT

India has the second largest population of the tribal population in the world. “Gujjars” tribes of H.P. still stick to their ancestral profession of buffalo rearing and selling of milk and milk products. Animal husbandry and dairying (AHD) signifies as the major occupation of “Gujjars” tribe and contribute to food, economic, environmental, institutional, health, educational, social, infrastructural, nutritional security and thus in total to the livelihood security of tribes. Even the poorest of the poor tribes often have livestock that can help them along a pathway out of poverty. Dairy animals like cattle, buffaloes and goat are important species of livestock production systems of the tribes which contribute significantly to the rural economy. This study emphasized the analysis of participation of tribal “Gujjar” farmers in animal husbandry occupation. The study was conducted in Una district of Himachal Pradesh. Data were collected from 80 randomly selected “Gujjar” farmers from two villages of Amb block and two villages of Gagret block using structured interview schedule. The participation was observed more in the aspects related to milking, feeding, health care and management, breeding and buffalo rearing.

**Key words:** AHD, Decision-making, Participation, Tribal Farmer.

\*Correspondence Email: chandaniasbhu@gmail.com

<sup>2</sup>DES&M Division, ICAR-National Dairy Research Institute, Karnal, Haryana-132001, India.

Mš jh vFkzkkL=] I kđ; dh , oa çdku çHkkx] jk"Vh; Ms jh vuq U/kku I ĄFkk] djuky] gfj; k.k & 132001] Hkkj r

çLrkouk

fo'o ea vkfnokl h tul j[; k ds ekeys ea Hkkjr nli jk l cl s cMk nsk gA vkfnokl h vHkh Hkh vk/kqud nfu; k dh thou'ksyh l svNirsgA , fiksi lsy, th dsfud ds 'kCndksk dsvuq kj] vkfnokl h , d l kekf'td l ey gStks vkerkij , d fuf'pr {ks=} cksyh l ka—frd l e: irk vksj , dh—r l kekf'td l æBu ds l kFk jgrsgA fgekpy çnsk , d mükj Hkkjrh; jkT; gS tggat ul æ; k dh fHkUurk dsl kFk jkT; dsfofHkUu fgLI kaeafgnrvkij efl\_ye "xq'tjka dh , d cMk vkcknh fuokl djrh gA "xq'tj" 'kCn dh mRi fuk "xkpj" l s gplz gS ftl dk eryc gS "xk; pjkus okyk" [1896] tks; g n'kkzk gSfd xq'tj vkfnokl h ey : i os xk; j [kus okys FkA xq'tj vkfnokl ; ka dk çed[k 0; ol k; i 'kqkyu , oa nq/k mRi knu gS ftl dk [kk ] vkfFkZl LokLF; ] 'kqf.kd , oai ksk.k l j {kk eaegROI wkZ ; kxnu gvksj bl çdkj Mj h vkfnokl ; ka ds vkt h fodk dk l k/ku gA Åuk ftyk nf{k.kh fgekpy çnsk dk , d igkMk {ks= gS tggk vf/kdkak % efl\_ye xq'tj vkfnokl h jgrsgA mudsvkt h fodk dk e[; l k/ku xk; ] HkA rFkk cdjh ikyu gA osT; knkrj vui <+gärFkk ntk vksj nq/k mRi knu djds e[; l ekt eaegROI wkZ; kxnu nrs gS jk; o vU; ] 2019/A

l kexh , oa ij h k.k fof/k

orëku 'kksk mükj Hkkjr ds Åuk ftyk eafd; k x; k] tks fgekpy çnsk jkT; dk , d igkMk {ks= gA ; gk vkfnokl h xq'tjka dh tul æ; k dk 90% l svf/kd Ms jh vksj i 'kqkyu xrfok/k; ka ea yxsgq gA bl v//k; u ds fy, Åuk ftys ds vEc rFkk xxjv nksCy, dlp tggk vkfnokl h xq'tjks dh l æ; k vf/kd gS dk p; u fd; k x; kA i q% çR; d Cy, d l snk&nksxkpsdk p; u fd; k x; kA bl rjg dy pkj xkpsj vEc Cy, d l s /kj xq'kjk , oa ol fu rFkk xxjv/ Cy, d l svEck/k , oa l ækub] dk p; u fd; k x; kA çR; d xkA l sU; ure , d nqk: i 'kqj [kus okys xq'tj vkfnokl h mükj nkrkvka dk çrjhc <æ l s puko fd; k x; kA vr ea , sPNd ueuk rduhd dk mi; kx djds çUk; d xkp l s 20 rFkk dy 80 mükj nkrkvka dk p; u fd; k x; kA l jfpr l k {kkrdkj vuq ph dks/; ku eaj [krs gq v/; ; u ds mäs; ka dks r\$ kj fd; k x; kA

ij .ke , oa foopuk

vkfnokl h xq'tj fd l kula dh l kekf'td , oa vkfFkZl fo'kkrk% mükj nkrk fd l h Hkh l kekf'td vuq ækku vFkO; fä

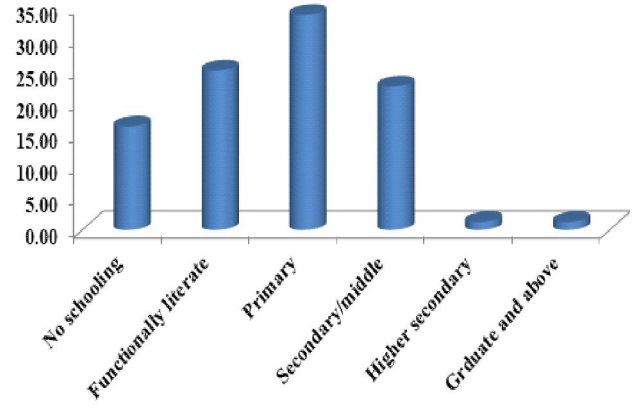
rkydk 1% i 'kqkyu eamudh Hkkxhknkj h dsvuq kj vkfnokl h xq'tj fd l kuks dk foj .ka

i 'kqkyu l s l EcfU/kr f0; k&dyki	vkofr	çfr 'kr
<b>1-[ku&amp;iku , oa pjkk çcaku</b>		
xHkZbrh HkA dks f [kykuk	60	75-00
dVMs dks f [kykuk	50	62-50
>k/s dks f [kykuk	50	62-50
nkuk dk feJ.k f [kykuk	70	87-50
eoš kh dks l kuh fi ykuk	48	60-00
l qfks pkjs dk l o/kz	80	100-00
pkjk , oa nkus dk j [k j [kko	80	100-00
<b>2&amp;foUkh; Hkkxhknkj</b>		
i 'kq vfhkys [kka dk j [k&j [kko	5	6-25
Ms jh l gdkjh ea Hkkxhknkj	48	60-00
__ .k ysk	30	37-50
tkuojka ds fy, chek	5	6-25
<b>3&amp;nqk: i 'kqka dk çcaku</b>		
-f=e xHkZkku	75	93-75
uj cNMka dk cf) ; kdj.k	35	43-75
xHkZbLFkk ds nqjku nq'khkky	30	37-50
çtuu ds l e; ea nq'khkky	60	75-00
cNMs ds Nm/kuk çcaku	56	70-00
<b>4&amp;LokLF; nq'khkky vksj</b>		
<b>i 'kqku çcaku</b>		
?kjsyq Lrj ij vke chekfj; ks dk funku	20	25-00
chekj i 'kqka dh nq'khkky	78	97-50
l øfer dMs dk fui Vkj	10	12-50
>kMw nstj l Okbz vksj HkA @xt; ka dks ugykuk	5	6-25
Vhdk	80	100
<b>5&amp;nq/k mRi kn çcaku</b>		
eof'k; ka l s ntk fudyuk	80	100
l gdkjh l æFkkvks jkjk ntk dh fcØh	23	28-75
Lo; a ntk mRi kn cukdj cpuk	4	5-00
ntk dks ?kj ?kj tkdj cpuk	20	25-00

dh ey bdkbz gA bl fy, ] mükj nkrkvka dh i "Bhkfe dk o.kz djuk l cl segROI wkZ gS D; kAd l kekf'td & 0; fäxr vksj l kekf'td & vkfFkZl y {k.k i 'kqkyu eaegROI wkZ Hkfedk fuHkksr gA l jfpr l k {kkrdkj vuq ph dk ç; kx djds , df=r MkV/k dk fo' ysk.k fd; k x; kA fp= 1 ea; g nq'kk x; k fd vf/kdkak mükj nkrk 1/5-00 çfr'kr 1/2 e/; e vk; q oxZ l s l EcfU/kr FkA ml dsckn 27-50 çfr'kr o) oxZ 1/50 o'kz l s T; knk 1/2 l s 17-50 Ohl nh ; øk oxZ l s l EcfU/kr FkA bl dk eryc gS dh ; øk vksj çij syks i 'kqkyu ds dk; kA eade 'kkfey FkA oekzo vU; 1/2016 1/2 ds bl h çdkj ds 'kksk eaHkh i k; k x; k dh vf/kdkak 1/65-00 çfr'kr 1/2 mükj nkrk e/; e vk; q oxZ l s l EcfU/kr FkA fp= 2 l s; g nq'kk x; k fd xq'tj vkfnokl h l epk; eaefgykvka dh Hkkxhknkj 1/8-75 çfr'kr 1/2 i # "kka 1/81-25 çfr'kr 1/2 ds epkcy s dk Oh de

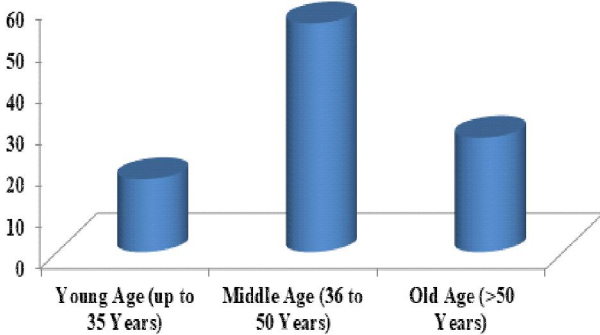
**Hkjrh; dfr'k vuq hku if=dk**

FkA bl dk qe[ k dkj .k vfnokl h bykdka f'k{kk 0; oLFkk dk ux.; gksuk gksl drk gSftl ds dkj .k vf/kdkak ?kjks eai q'k gh ?kj dseq[k; k FkA U; ka 2009% Mj d k o vU; ] 2010% usHkh vi us'kksk ea, d k gh i k; kA fp= 3 ; g n'kkz-k gS dh mUkjnrkvks ea l s dny 1-25 qfr'kr vfnokl h fdl ku gh ckjgoh ; k LukUkd rd dh i <kbzfd; sgA 22-50 qfr'kr fdl ku faoh ikl FksrFkk 33-37 qfr'kr ckFkfed rd dh f'k{kk xg.k fd; sFks, oa25-00 qfr'kr vfnokl h fdl ku qdk; kRed : i l sl k{kj FkA bl 'kksk l s; g Hkh i rk pyk dh 16-25 qfr'kr xq-tj vfnokl h fuj{kj Fks tks i <us fy[kus ea vl efkz FkA fuj{kj ka ds de qfr'kr dk i 'kqkyu dsfodkl ij l dkj kUked qHkko i Ml gSrFkk Mj h ds{k= eacgr l suohudj .k gq gA ifjokj dk vkdkj dk ifj.kke fn[krk gSdh 1/2 fp= 4 1/2 vf/kdkak xq-tj mUkjnrk 1/50-00 qfr'kr 1/2 e/; e vkdkj ds ifjokj l sFk tcd 35-00 qfr'kr vj 15-00 qfr'kr mUkjnrk Oe'k%Nks/svkdj vj cMs vkdkj ds ifjokj l s FkA tkp ifj.kke l sirk pyrk gSdh 1/2 fp= 5 1/2 vf/kdkak qfrokfn; ks 1/75-00 Qhl nh 1/2 ds ifjokj eai q'k & L=h vuq kr e/; e oxzdk Fkk tcd

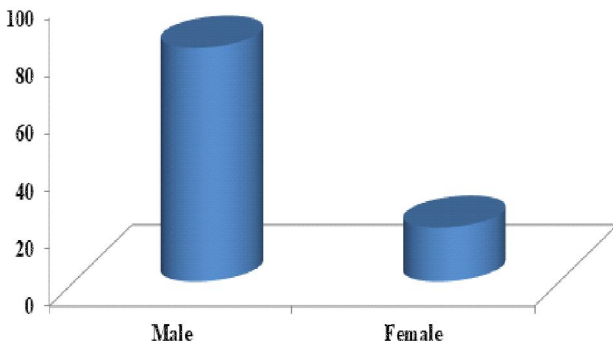


fp= 3% kS{kf.kd fLFfr ds vuq kj mUkjnrkvks dk foj .ka

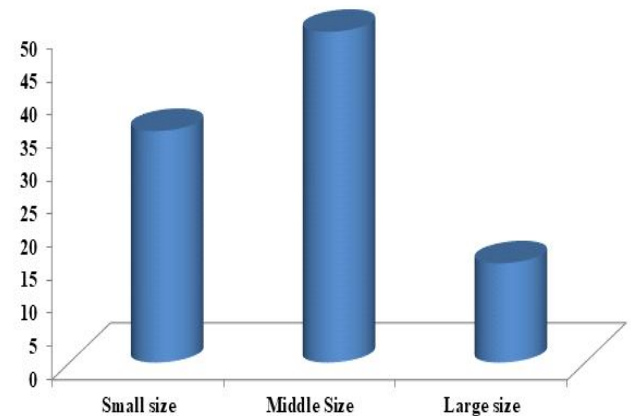
13-75 , oa11-25 qfr'kr vfnokl h fdl ku Oe'k%U; ure rFk vf/kdre i q'k&L=h vuq kr oxz l sl EcB/kr FkA fdl h Hkh ifjokj eai q'k&L=h dk vuq kr ifjokj ds vfkFkd fodkl dks qHkfor djrk gA fp= 6 ds vuq kj vf/kdkak xq-tj vfnokl h 1/46-25 qfr'kr 1/2 ds ikl e/; e vkdkj 1/4&7 1/2 ds nqk: i 'kqFk tcdh 31-25 qfr'kr vj 22-50 qfr'kr mUkjnrkvks ds ikl Oe'k%Nks/s4 rFk cMs 7 > q FkA oekzo vU; 2016% usHkh vi us'kksk ea, d k gh ifj.kke i k; kA fp= 7 l s; sl e>k tk l drk gSdh mUkjnrkvks dschp] vf/kdkak mUkjnrk; a 1/53-75 qfr'kr 1/2 qfrfnu 12-52&21-25 yHVj dschp nkk dk mUki knu fd; } tcdh 15-00 qfr'kr 12-52 yHVj l sde vj 31-25 qfr'kr mUkjnrk; a 21-25 yHVj l s vf/kd nq/k dk mUki knu fd; } tks ; g n'kkz-k gSdh xq-tj vfnokl h fdl ku i 'kqkyu vj nq/k mUki knu eadkQh fui qk gA orZku tkp l s; g i rk pyrk gSdh 1/2 fp= 8 1/2 55-00 qfr'kr fdl ku qfrfnu 10-09 l s18-



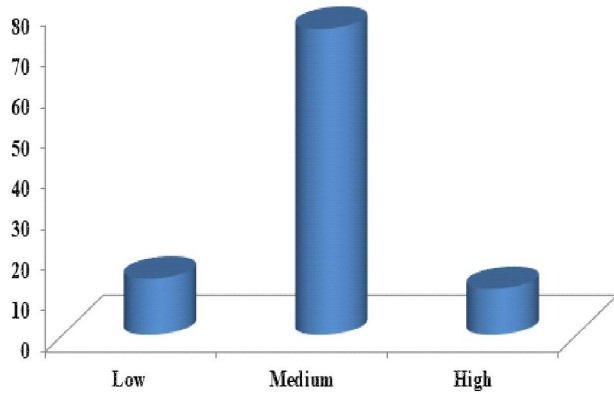
fp= 1% vk; q l eij ds vuq kj mUkjnrkvks dk foj .ka



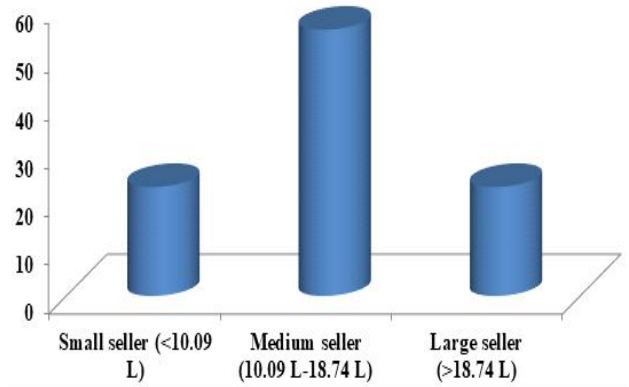
fp= 2% fyk l eij ds vuq kj mUkjnrkvks dk foj .ka



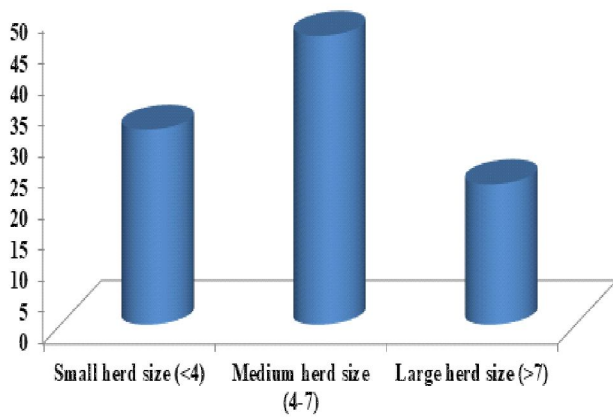
fp= 4% ifjokj ds vkdkj ds vuq kj mUkjnrkvks dk foj .ka



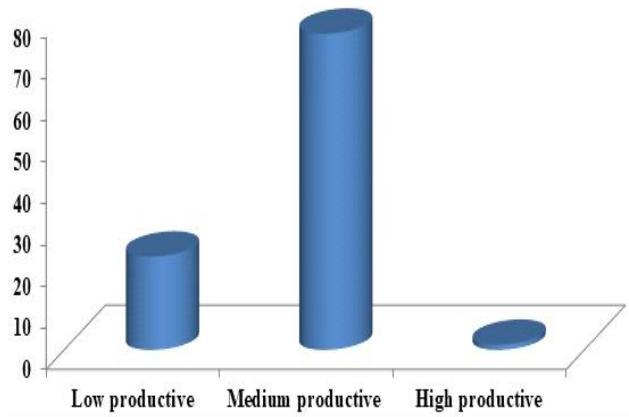
fp= 5& fy&kuq kj dsvuq kj m&knkrkv&dk foj .kA



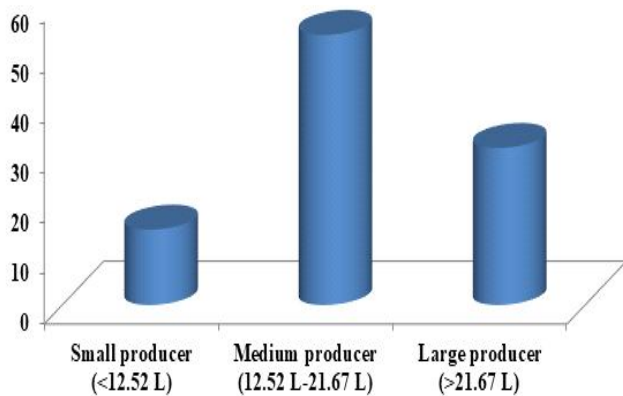
fp= 8& n&/k fo&; dsvuq kj m&knkrkv&dk foj .kA



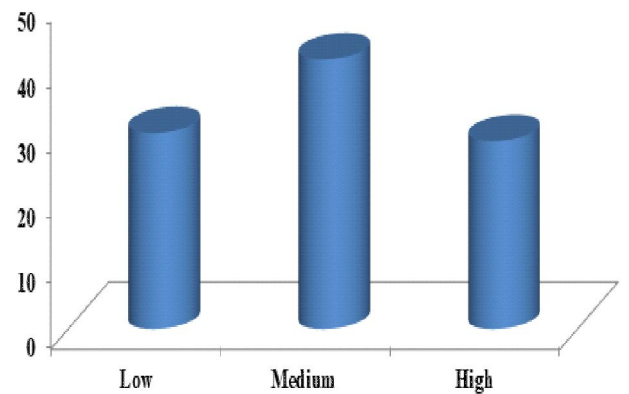
fp= 6%i 'kq>qM dsv&dkj dsvuq kj m&knkrkv&dk foj .kA



fp= 9%mi kn& i 'kqv&kj dsvuq kj m&knkrkv&dk foj .kA



fp= 7%n&/k m& i knu dsvuq kj m&knkrkv&dk foj .kA



fp= 10%l keft&d H&kn&kj dsvuq kj m&knkrkv&dk foj .kA

74 y&vj n&/k &frnu &rs&st&fd 22-50 Qh& nh m&knkrk 10-09 y&vj l s&de n&/k &p i&rs&ks , o&22-50 &fr'kr f&dl ku &frnu 18-74 y&vj l s&t; kn& n&/k &p n&rs&f&A fp= 9 l s; g i&rk pyr&k g&sdh v&/k&dk&k f&dl ku 17-25 &fr'kr 1/2 e/; e o&x&ds i 'k&mi&kn& v&u&kj ok&ys&f&A t&fd 22-50 , o&1-25 &fr'kr f&dl ku &e'k&fu&e v&g& m&pp i 'k&mi&kn&

v&u&kj ok&ys&f&A l keft&d H&kn&kj dk i&fj .k&e 1/2p= 10% ; g&cr&kr g&sdh m&knkrkv&A& l s&41-25 &fr'kr e/; e l keft&d H&kn&kj ns&gs&f&A t&fd 30-00 &fr'kr de l keft&d H&kn&kj dj&gs&f&A& 28-75 &fr'kr m&pp l keft&d H&kn&kj ns&gs&f&A n&h 1/2013 1/2 us&H&h vi us 'k&sk l keku i&fj .k&e i&k; k&A

fofHku xrfof/k; ka ea vknokl h xq̄tj fdl kuka  
 dh Hkxhknjlf% [kku&i ku , oapjkj ccaaku] foUkh; ccaaku]  
 nq̄kk: i 'kq/ka dk ccaaku] LokLF; nq̄kHkky vls i 'kq/ku ccaaku  
 , oanq̄/k mRi kn ccaaku rFkk cl d j .k vls ntk dsfoØ;  
 I fgr Ms jh Qkfeak dh vuod xrfof/k; ka ea vknokl h  
 fdl kuks }kjk vnk dh x; h Hkfedk dk fo'ySk.k fd; k x; k  
 vls rkydk 1 ea n'kkz k x; kA vknokl h fdl kuks dh  
 Hkxhknj h dk i 'kq/ks ds [kku&i ku , oapjkj ccaaku ds {ks=  
 eafd; k x; k rFkk rkydk 1 ea cLr q̄ fd; k x; k tks; g  
 c̄nf'kr djrk gSdh vf/kdkak fdl ku I v[ks pkjs dk I d/kU  
 1/100 c̄fr'kr 1/2 pj k , oanuskd j [k j [kko 1/100 c̄fr'kr 1/2  
 nkuk dk feJ.k f[kykuk 1/87-50 c̄fr'kr 1/2 xHkzbrh HkA dks  
 f[kykuk 1/75-00 c̄fr'kr 1/2 >ks/s, oadVMs dks f[kykuk 1/62-50  
 Qhl nh 1/2 rFkk eos kh dks i kuh fi ykuk 1/60-00 c̄fr'kr 1/2 dk; k  
 ea 'kkfey FkA bl h rjg ds ifj .k ke pk; y o vU; 1/2009 1/2  
 rFkk ykgs/h o vU; 1/2012 1/2 }kjk c̄ktr fd; k x; kA bl rjg  
 foUkh; Hkxhknj ds fo'ySk.k I sir k pyr k gSdh \_\_.k yus  
 1/87-50 c̄fr'kr 1/2 i 'kq/vHky [kka dk j [k&j [kko 1/6-25 Qhl nh 1/2  
 rFkk tkuo j kadsfy, chek 1/6-25 c̄fr'kr 1/2 djokusea vknokl h  
 fdl ku dke Hkxhknj FkS , oa Ms jh I gdkjh 1/60-00 c̄fr'kr 1/2  
 ea vf/kd Hkxhknj Fks A rkydk 1 ea cLr q̄ MkV k I sir k  
 pyr k gSdh vknokl h fdl ku nq̄kk: i 'kq/ka dk ccaaku ij  
 Hkh fo'kSk /; ku nrs rFkk 93-75 c̄fr'kr fdl ku -f=e  
 xHkzkku dks viuk; A bl ds vykok rkydk 1 I shk ir k  
 pyr k gSdh vf/kdkak mUkj nrk c̄tuu dsl e; eanq̄kHkky  
 1/75-00 c̄fr'kr 1/2 cNMs ds NMkuk ccaaku 1/70-00 c̄fr'kr 1/2  
 uj cNMka dk cf) ; kdj .k 1/43-75 c̄fr'kr 1/2 rFkk xHkzLFkk  
 ds nq̄ku nq̄kHkky 1/87-50 Qhl nh 1/2 ea 'kkfey FkA mi ; p̄  
 ifj .k ke fudy fl g 1/2011 1/2 ds ifj .k ke ds vuq i gA ; g  
 Hkh nq̄kk x; k dh vknokl h fdl kuks eadpy 6-25 Qhl nh  
 >kMw nq̄s I Qkbz vls HkA @xk; ka dks ugykuk ep̄ 12-50  
 Qhl nh I dfer dMsdk fui Vkj sear Fk 25-00 Qhl nh ?kjsyq  
 Lrj ij vke chekfj ; ksdk funku djus ea 'kkfey FkA  
 mi ; p̄ ifj .k ke Qgk k o vU; 1/2016 1/2 ds ifj .k ke ds vuq i  
 gA vf/kdkak fdl ku Vhdkdj .k 1/100 c̄fr'kr 1/2 rFkk chekj  
 i 'kq/ka dh nq̄kHkky 1/87-50 c̄fr'kr 1/2 djusea vR; f/kd : i  
 I s 'kkfey FkA rkydk 1 }kjk nq̄/k mRi kn ccaaku ds  
 fo'ySk.k I s; g ir k pyr k gSdh 100 c̄fr'kr fdl ku Lo; a  
 eos'k; ka I s ntk fudyk usea 'kkfey Fks , oa 25-00 c̄fr'kr  
 fdl ku ntk ?kj&?kj tkdj c̄prs Fks vls 28-75 c̄fr'kr  
 fdl ku ntk dh fcØh I gdkjh I LFkkvks }kjk djrs FkA  
 rkydk 1 I s; g Hkh ir k pyr k gSdh 5-00 c̄fr'kr fdl ku

, s shk Fks tks ntk I smUkn tS sfebkbz k cukdj cpusea  
 'kkfey FkA

fu"d"z

fgekpy c̄ns k dsxq̄tj vknol h fdl kuksdse/;  
 fd; sx, bl v/; ; u I s; g fu"d"z fudyk tk I drk gS  
 dh i 'kq/kyu , oanq̄/k mRi knu dk xq̄tj fdl kuksdsth  
 dk vfhku va gS rFkk os thfodksi ktU ds fy, bl h  
 0; ol k; ij fuHkz gSA os I fØ; : i I s Ms jh Qkfeak ds  
 fofollu igyq/kaea tS si 'kq/ku ccaaku] [kku&i ku , oapjkj  
 ccaaku] nq̄kk: i 'kq/ka dk ccaaku] LokLF; nq̄kHkky vls  
 i 'kq/ku ccaaku , oanq̄/k mRi kn ccaaku vkn ea 'kkfey gA  
 os fuEufyf [kr i 'kq/kyu xrfof/k; ka ea vf/kd Hkxhknj  
 isk djrs gS tS & xHkzbrh HkA dks f[kykuk] dVMs dks  
 f[kykuk] nkuk dk feJ.k f[kykuk] I v[ks pkjs dk I d/kU]  
 pj k , oanuskd j [k j [kko] Ms jh I gdkjh ea Hkxhknj h  
 -f=e xHkzkku] uj cNMka dk cf) ; kdj .k] xHkzLFkk ds  
 nq̄ku nq̄kHkky] c̄tuu dsl e; eanq̄kHkky] ?kjsyq Lrj ij  
 vke chekfj ; ksdk funku] chekj i 'kq/ka dh nq̄kHkky] Vhdk]  
 eos'k; ka I s ntk fudyka I gdkjh I LFkkvks }kjk ntk dh  
 fcØh rFkk Lo; antk mRi kn cukdj cpuka c̄f'k{k.k dk; kØek  
 c̄n'kU h vls vknokl h i 'kq/kydks ds fy, i 'kq/kyu ds  
 fofHku igyq/ka I s I Ec̄/kr I feukj dh 0; oLFkk fofHku  
 cl kj , t̄l ; kavls uhfr fuekz'kvka }kjk fd; k tkuk pkfg, A  
 vko'; d fuos kka dh vki fir- chek vls fofHku Mj h mRi kn ka  
 dsfy; k cktkj mi yCk djkdj Mj h Qkfeak dh p̄qksr; ka  
 dks vol jka ea ifjofr̄ fd; k tk I drk gA

I nHkz

Chayal, K., Daaka, B.L. and Suwalka, R.L. (2009).  
 Analysis of role performed by farm women  
 in dairy farming. *Indian Journal of Dairy  
 Science*, **62**(6): 491-494.  
 Devi, L. (2013). Adoption of dairy farming technologies  
 by livestock farmers. *Indian Research Journal  
 of Extension Education*, **13**(2): 57-61.  
 Lahoti, S.R., Chole, S.R., and Rathi, N.S. (2012). Role  
 of women in dairy farming. *Indian Journal  
 of Dairy Science*. Retrieved from [http://  
 epubs.icar.org.in/ejournal/index.php/IJDS/  
 article/view/25441](http://epubs.icar.org.in/ejournal/index.php/IJDS/article/view/25441)  
 Nikulsinh, M. (2011). Role performance of tribal farm  
 women in agricultural and animal husbandry  
 in Gujarat. *Karnataka Journal of Agricultural  
 Sciences*, **24**(5): 672-674

- Nyong, A., Dabi, D., Adepetu, A., Berthe, A. and Ibemegbulem, V. (2008). Vulnerability in Sahelian Zone of North Nigeria: A household-level assessment. In: Climate change and vulnerability. (Eds) Leary N, Conde C, Kulkarni J, Nyong A. Published in *Journal of Earth Scan*, London, UK. Pp, 218-238.
- Rai, C., Singh, K., Lal, S., Arti, and Azad, A. (2019). Adoption and Perceived Effectiveness of Indigenous Technical Knowledge among Tribal Farmers for Bovine Management: An Exploratory Study. *International Journal of Livestock Research*, **9**(2), 243-253. doi: 10.5455/ijlr.20180921074902
- Vahora, S.G., Thorat, G.N. and Ramjiyani, D.B. (2016). Participation of Tribal Dairy Women Special Reference to Feeding and Breeding Practices in Animal Husbandry and Dairy. *Gujrat Journal of Extension Education*, **27**(1): 98-101.
- Verma, A. P., Ansari, M.A., Ranjan, R., Raghuvanshi, R., Patel, D. and Bhatt, A. (2016). Multi-dimensional co-relational analysis of attitude of farmers towards utilization of e-Choupal in their farm communication. *International Journal of Agriculture Sciences*, **8**(49): 2072-2075.